

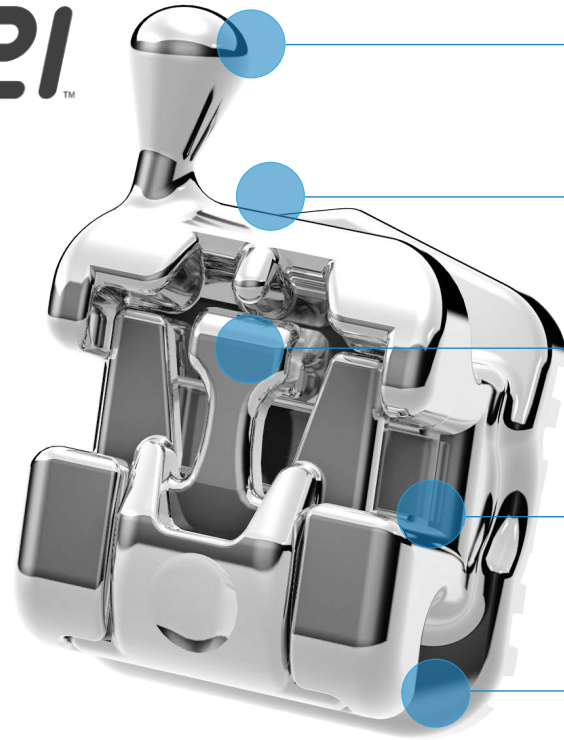
Pitts21™

3D CONTROL HAS ARRIVED



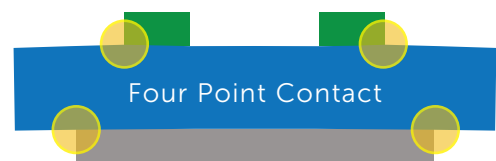
orthodontics
Finish with the Best

Pitts21™

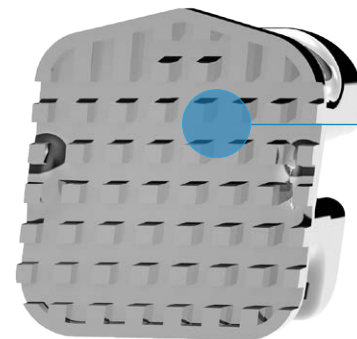


The Science of the Pitts 21 Door

Designed for enhanced stability and control.



■ Door ■ Wire ■ Bracket Body



Integrated Hooks

An available option on the 3's, 4's and 5's for your convenience at no extra charge.

Smooth, Rounded Edges

Ensures that your patients have the most comfortable experience.

Unique Door Design

The unique sliding door creates improved control of rotation and torque, while providing enhanced structural stability.

.021 Precision Slot Depth

The reduced slot depth provides a tighter pairing between the wire and the bracket leading to earlier engagement, improved torque, and better control.

Large Under Tie-Wing Clearance

Supports early elastics, ligatures, metal ligatures, and power chain.

Base Lock Plus

One piece base/bracket creates an optimum pad-to-tooth fit and bond strength resulting in fewer broken brackets and fewer debonding issues.

Square Wire Finishing

Provides you with unparalleled 3D control earlier and throughout treatment.

Pitts 21 Self-Ligating System

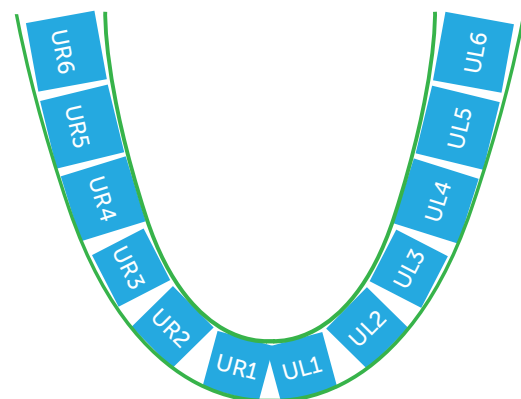


Pitts 21™

- First and only self-ligating system that provides **3D control** earlier and throughout treatment.
- Revolutionary **square wire finishing** uses 30-40% lighter forces* with greater control, comfort, and sliding mechanics.
- **Progressive slot** provides an intelligent balance of control and freedom of movement to provide effective sliding mechanics.
- **Predictable finishes** in as few as 4 wires.

*Horizontal and vertical forces; compared to rectangular systems

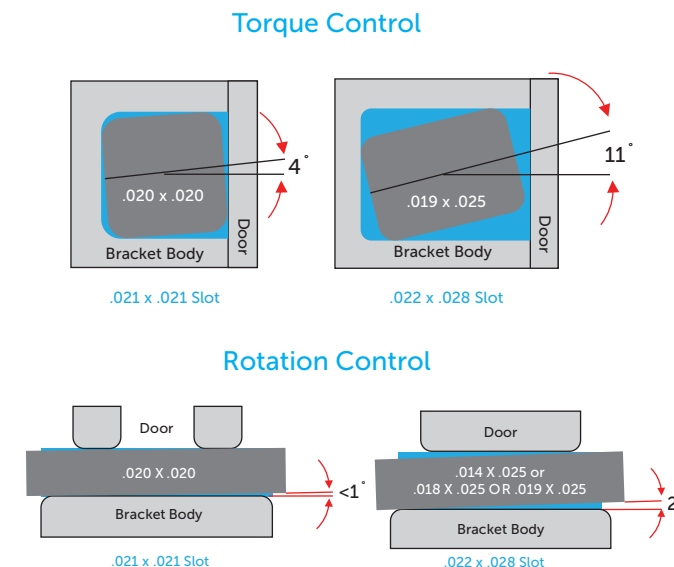
Slot depth, from buccal to lingual.



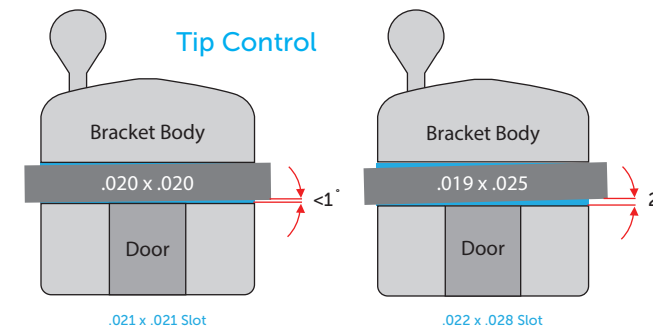
Progressive Slot Depth Delivers 3D Control

The patent pending Pitts 21 system progressively varies the slot from square in the anterior to rectangular in the posterior portion of the arch. **This provides exceptional control of the anterior teeth while allowing for increased freedom of movement on the posterior teeth.**

Square Wire Finishing



Pitts 21 Self-Ligating System



On the social six, Pitts 21 catches a couple **64% sooner** than a rectangular system, while also **reducing play by 70%**. All with **30-40% lighter forces**, providing you with precise, comfortable 3D control earlier and throughout treatment.

Powerful Benefits

Designed to Reduce Treatment Time

Improved early 3D control of torque, tip and rotation reduces treatment time

Remarkable Patient Comfort

Square wire finishing uses 30-40% lighter forces* with greater control than traditional rectangular wire

Efficient Tooth Movement

True 3D control in as few as 4 wires promotes efficient tooth movement

Stunning Smiles

Pitts active early protocols enable you to create the most stunning smiles

*Horizontal and vertical forces; compared to rectangular systems



Pitts 21 Outperforms Rectangular

In the charts below you can see the impact of Pitts 21. Pitts 21 catches a couple sooner when compared to a rectangular archwire system. In addition to catching a couple sooner and finishing in as few as 4 wires, Pitts 21 delivers more precise 3D movement while using lighter forces than other rectangular systems. A quicker couple, with decisive control - Pitts 21.

Pitts 21 Square Wire Treatment vs. Rectangular Wire Treatment

Pitts 21 Square Wire Treatment - .021 x .021								
Phase	Initial		Working			Finishing		
Wire	.014 Thermal Activated Nickel Titanium		.018 x .018 Ultra-Soft Thermal Activated Nickel Titanium		.020 x .020 Thermal Activated Nickel Titanium		.020 x .020 Beta Titanium or Stainless Steel	
Torque	No Control		14.2°	51% Sooner	4.2°	70% Sooner	4.2°	62% Sooner
Rotation	4.5°	47% Sooner	1.9°	Same	0.6°	65% Sooner	0.6°	65% Sooner
Tip	3.8°	11% Sooner	1.9°	55% Sooner	0.6°	74% Sooner	0.6°	66% Sooner

Compared To	Rectangular Archwire Treatment - .022 x .028				
Phase	Initial		Working		Finishing
Wire	.014 Nickel Titanium	.018 Nickel Titanium	.014 x .025 Nickel Titanium	.018 x .025 Nickel Titanium	.019 x .025 Stainless Steel
Torque	No Control	No Control	28.8°	13.8°	10.9°
Rotation	8.5°	6.1°	1.9°	1.9°	1.9°
Tip	4.3°	2.2°	4.3°	2.2°	1.6°

*Charts based on anterior teeth (cuspid to cuspid) with minimal A/P discrepancy

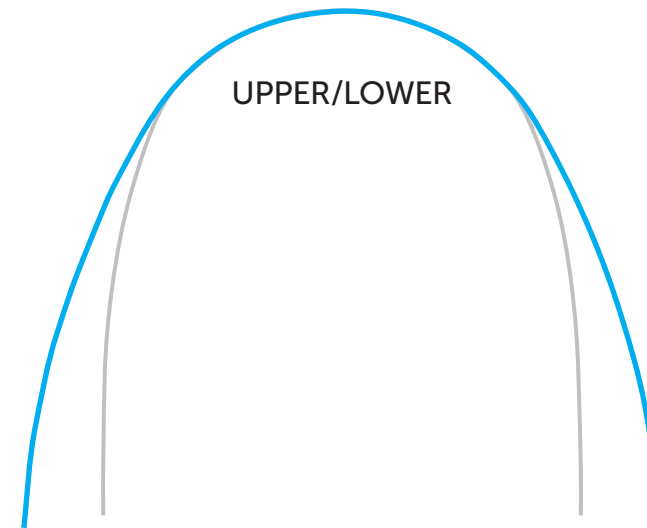
Pitts 21 Catches a Couple Sooner!

As Few as Four Wires From Start to Finish

With the Pitts 21 system you will use as few as four wires from start to finish. Fewer wires means fewer appointments for your patients, saving you time and money.

Phase	Initial	Working		Finishing	Optional Archwires	
Wire	.014 Thermal Activated Nickel Titanium	.018 x .018 Ultra-Soft Thermal Activated Nickel Titanium	.020 x .020 Ultra-Soft Thermal Activated Nickel Titanium	.020 x .020 Beta Titanium	.019 x .019 Stainless Steel	.020 x .020 Stainless Steel
					Extraction Cases	Extra Width

We offer you a variety of archwires to complement the Pitts 21 bracket and deliver the torque and control you need with square wire finishing. The Pitts 21 Broad archwires have been meticulously designed to reduce extractions while achieving torsion even earlier meaning you can finish cases faster.



PITTS 21 PITTS BROAD ARCHFORM
compared to **NATURAL ARCHFORM**

Diagrams represent typical arch shapes. Actual sizes may vary slightly.

"I had the opportunity to test the Pitts 21 bracket system, which included the recommended archwire sequence. I was amazed in what I experienced which included faster and greater control with both rotation and torque and with lighter forces. Even though the sample size was limited, based upon what I experienced, I believe Pitts 21 is a powerful precision appliance system with previously unknown control."

James Morrish D.D.S.
Morrish Stewart Orthodontics

Single Prescription Inventory

Unlike other bracket systems, the versatile Pitts 21 System is a single prescription for all patients. Without the need for a variable bracket inventory, you can simplify processes for your staff while reducing your bracket inventory, saving you both time and money.

Right

.022" x .026" slot		.021" x .026" slot		.021" x .021" slot	
-27° torque +9° offset	-22° torque +9° offset	-11° torque +2° angle	+9° torque +5° angle	+6° torque +9° angle	+12° torque +5° angle
		2.80mm M/D	3.05mm M/D	2.54mm M/D	3.05mm M/D
2nd Molar (UR7/UR6) H4 Buccal Tube w/ Gingival Hook 907.2101	1st Molar (UR6) H4 Buccal Tube w/ Gingival Hook 907.2099	Bicuspid (UR4/5) No Hook 946.2009 w/ Distal Hook 946.2011	Cuspid (UR3) No Hook 946.2005 w/ Distal Hook 946.2007	Lateral (UR2) No Hook 946.2003	Central (UR1) No Hook 946.2001

Right

.022" x .026" slot		.021" x .026" slot		.021" x .021" slot	
+3° offset -22° torque	+3° offset -22° torque	+2° angle -17° torque	+2° angle -12° torque	+5° angle +9° torque	0° angle -6° torque
		2.80mm M/D	2.80mm M/D	3.05mm M/D	2.54mm M/D
2nd Molar (LR7) H4 Buccal Tube w/ Gingival Hook 907.2107	1st Molar (LR6) H4 Buccal Tube w/ Gingival Hook 907.2107	2nd Bicuspid (LR5) No Hook 946.2022 w/ Distal Hook 946.2024	1st Bicuspid (LR4) No Hook 946.2018 w/ Distal Hook 946.2020	Cuspid (LR3) No Hook 946.2014 w/ Distal Hook 946.2016	Anterior (L1/2) No Hook 946.2013

Single Prescription Inventory

Standard Set (20 Brackets) 5x5
Hooks on 3's, 4's, & 5's
#946.2032

Standard Full Set (28 Brackets) 7x7
Hooks on 3's, 4's, & 5's
#946.2155

Left

.021" x .021" slot			.021" x .026" slot		.022" x .026" slot	
+12° torque +5° angle	+6° torque +9° angle	+9° torque +5° angle	-11° torque +2° angle	-22° torque +9° offset	-27° torque +9° offset	
3.05mm M/D	2.54mm M/D	3.05mm M/D	2.80mm M/D			
Central (UL1) No Hook 946.2002	Lateral (UL2) No Hook 946.2004	Cuspid (UL3) No Hook 946.2006 w/ Distal Hook 946.2008	Bicuspid (UL4/5) No Hook 946.2010 w/ Distal Hook 946.2012	1st Molar (UL6) H4 Buccal Tube w/ Gingival Hook 907.2100	2nd Molar (UL7/UL6) H4 Buccal Tube w/ Gingival Hook 907.2102	

Left

.021" x .021" slot				.021" x .026" slot		.022" x .026" slot	
0° angle -6° torque	0° angle -6° torque	+5° angle +9° torque	+2° angle -12° torque	+2° angle -17° torque	+3° offset -22° torque	+3° offset -22° torque	
2.54mm M/D	2.54mm M/D	3.05mm M/D	2.80mm M/D	2.80mm M/D			
Anterior (L1/2) No Hook 946.2013	Cuspid (LL3) No Hook 946.2015 w/ Distal Hook 946.2017	1st Bicuspid (LL4) No Hook 946.2019 w/ Distal Hook 946.2021	2nd Bicuspid (LL5) No Hook 946.2023 w/ Distal Hook 946.2025	1st Molar (LL6) H4 Buccal Tube w/ Gingival Hook 907.2108	2nd Molar (LL7) H4 Buccal Tube w/ Gingival Hook 907.2108		

Pitts 21 Patient

Initial



2.5 oz elastics on lower 3's to upper 5's (anterior) 24-hours a day
 2.5 oz elastic on upper 2's to lower 1's (reverse rainbow)
 .014 Wire
 Bite-Turbos

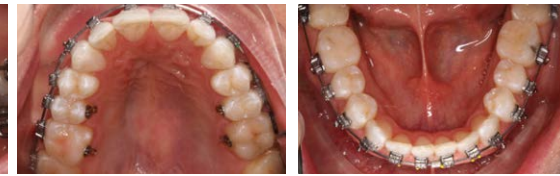
Initial Bonding



Photos taken throughout treatment by:
 Ortho Country Orthodontics
 Ollins Orthodontics
 Littlejohn Orthodontics
 Maccaro Orthodontics

Pitts 21 Patient

6 Months Progress



Repositioned Brackets
 .020 x .020 Ultra-Soft Thermal Activated

11 Months Progress



.020 x .020 Ultra-Soft Thermal Activated
 Nickel Titanium Wire

Additional Pitts 21 Products

Pitts 21™ 5-Case Starter Kit

We want you to experience the difference of the Pitts 21 system yourself with our Pitts 21 starter kit. Our starter kit includes: 5 Full Sets (7x7) of Pitts 21 brackets and buccal tubes, (7) Sets of Pitts 21 Pitts Broad Arch-wires (5 upper and 5 lower of each set), Pitts 21 Tool, Angled Self-Locking Bracket Tweezer, USB Flash Drive, and Pitts 21 Kit Brochure.



#946.2150

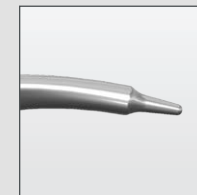


H4 TOOL™
 Pitts 21



The H4/Pitts 21 Tool is an excellent opening and closing instrument for all Pitts 21 brackets. The sloped tip provides a comfortable angle for opening and closing bracket doors.

#916.0100



Director Tool



The Director Tool swiftly opens the Pitts 21 doors. It also helps direct wires for removal and placement.

#916.0101

A transformational new self-ligating bracket system that delivers 3D control for fast and more precise finishes.



"As a practicing orthodontist and as a Pitts 21 patient, I can see firsthand the advantages of a square bracket slot. The control, speed and torque control were vastly superior as compared to my mini-twin bracket patients."

Jeff Haskins D.D.S., M.S., P.C.

Village Orthodontics

Thomas Pitts D.D.S., M.S.D.

Dr. Tom Pitts is a world renowned leader in esthetic orthodontics and is highly recognized for his teaching on orthodontic finishing and clinical excellence. Dr. Pitts is most known for his innovative protocols and creation of the Smile Arc Protection. He has a variety of clinical publications and has been an active lecturer since 1986. He is also an associate clinical professor at the University of Nevada, Las Vegas. Dr. Pitts currently practices at Ortho Country Orthodontics, OC's on-site orthodontic clinic.

Ready to finish with the best?
Call us today or visit our website.

1 (877) 820-8417 | www.oc-orthodontics.com



orthodontics

OC Orthodontics

1300 NE Alpha Dr.
McMinville, OR 97128 USA

©2017 All Rights Reserved OC Orthodontics Rev. B